

COLDFIRE®

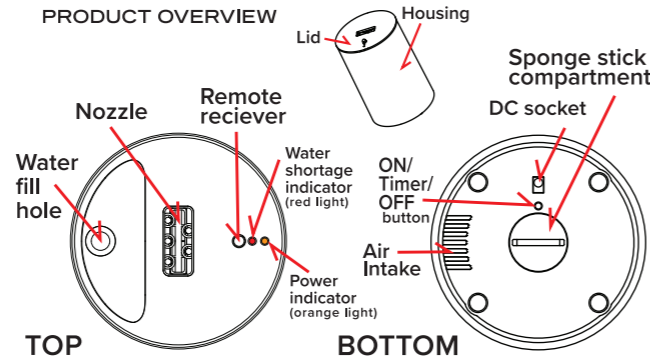
faux fire tabletop décor

Dear Valued Customers,

Thank you for purchasing the Coldfire® faux fire tabletop décor product. For the best performance, please read the instructions inside.

Thank you for choosing our product.

PRODUCT OVERVIEW



PACKING LIST

(1) Coldfire® Device (including Lid), (1) Sponge Stick Installed (6) Sponge Stick Replacements, (1) USB Power Cord, (1) Adapter, (1) 4.25oz Measuring Cup (1) Remote Control, (1) User Manual.

FUNCTION

1. Remote Function: ON/OFF/TIMER
2. Timer Function: 3 hours ON and 21 hours OFF

STEPS TO USE

1. Unpack the machine and all accessories.
2. First use please remove installed sponge stick and submerge in water for a minimum of 10 minutes. Then

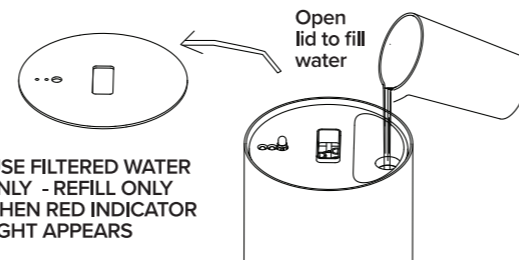
place into the compartment cap located on the bottom of your Coldfire® device and lock cap in place.

3. Plug it in with USB cable and adapter (both included) into your outlet. Orange light indicates powered ON.

4. Remove lid and fill your Coldfire® device using the pre-measured 4.25oz provided measuring cup with filtered water, pictured below. Be sure to not overfill. Please make sure to ONLY fill in the water fill hole not the nozzle.

5. Use the remote to turn ON with ON button or press the button located on the bottom of your Coldfire® once. To set the 3-hour Timer, use the remote TIMER button or press the button on the bottom of your Coldfire® twice. The Timer will stay on for

3 hours and off for 21 hours, and then repeat until out of water. To turn your Coldfire® OFF, use the remote OFF button or press three times on the bottom button.



IMPORTANT NOTICES

1. Please read the user manual provided to assure you the user are properly using your Coldfire® device.
2. USE FILTERED WATER ONLY.
3. Keep your Coldfire® device on a level surface and avoid shaking your Coldfire® device, especially when turned ON, or it may stop working (refer to troubleshooting).
4. Due to this device using enclosed water, we recommend emptying the remaining water when not in use to avoid bacteria growing. This is to assure the best performance.
5. Sponge stick can dry out if the Coldfire® is not used for a long period of time. Remove sponge stick and soak in water for a minimum of 10 minutes. If still not working replace with new sponge stick (included), submerging in the water first.
6. Be sure to keep water away from power cord and plug, it could rust and will cause your device to short circuit.
7. Do not use the Coldfire® device under direct sunlight or rain. For optimal use we recommend indoor or covered outdoor areas.
8. Coldfire® will work best in darker environments. Please note wind and light will affect the visual flame effect.
9. USE the included replacement sponge sticks ONLY, when you need replacements, please visit www.illure.com for information on where to purchase.

10. Do not cover the bottom of the Coldfire® device, if fan is blocked this will influence the flame effect to not emit.

11. Recommended when your Coldfire® device is not in use for multiple days, but water was left in unit, empty all water from your device and let dry out before re-filling.

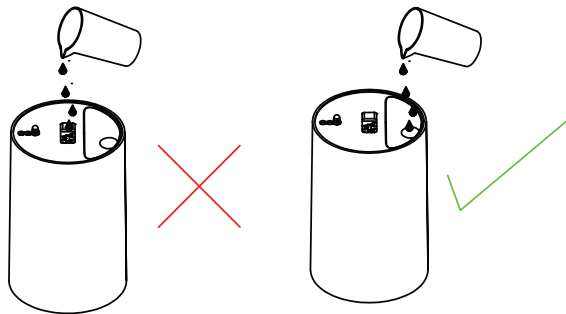
LIMITED WARRANTY

Your Coldfire® module is guaranteed to be free from manufacturing defects for a period of ninety (90) days from the date of purchase. We will replace your defective Coldfire® module with the same or similar item. This warranty does not cover damage due to neglect, misuse, exposure to excessive heat or improper battery installation.

Please contact us by e-mail at mail@illure.com for warranty information. Proof of purchase is required.

NOT RECOMMENDED, COULD VOID WARRANTY:

1. ONLY FILL WATER IN DESIGNATED WATER FILL HOLE, REMOVE LID TO FILL. If filled incorrectly water will flow out the bottom of device.
2. Do NOT fill with essential oil or other fragrances.
3. Do NOT fill water over the 'MAX' fill hole, recommended to use included 4.25oz water measuring cup to assure appropriate water amount is being filled. Do not fill again until indicator light signals the water shortage, light will turn red.
4. Do NOT use unfiltered water, it will disrupt the flame and shorten the service life of your Coldfire® device.
5. To avoid electric shock please be aware when plugging in your Coldfire® device.

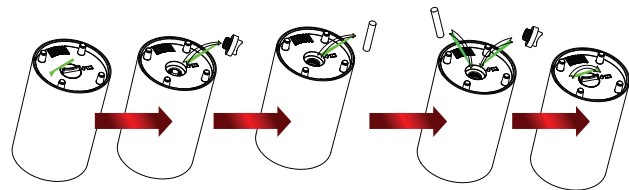


MAINTENANCE

Water quality will affect the lifespan of the Coldfire® sponge stick. We suggest replacing the sponge stick every 3-6 month for optimal performance. To replace sponge stick, please unplug if plugged in, shut off your Coldfire® device and pour all water out. Please see diagram below for further details.

STEPS FOR REPLACING SPONGE STICK

1. Twist the cap located on the bottom of the Coldfire® device turning counterclockwise.
2. Remove the used sponge stick and throw away
3. Replace with new sponge stick (included) submerging in water first for a minimum of 10 minutes
4. Place new sponge stick in cap and twist the cap back in place to assure its in lock position.
5. Place your Coldfire® device upright.
- 6) Sponge stick installation complete.



CLEANING

1. Turn off your Coldfire® device and unplug if plugged in.
2. Pour out all remaining water and mix 6-10 drops of vinegar if preferred with no more than 4.25 oz of filtered water and add to your Coldfire® device water fill hole. Let sit for two minutes, allowing the vinegar to dissolve any deposit buildup. Pour out vinegar/water solution and repeat with filter water only.
3. Do not submerge any part of your Coldfire® device, excluding the water fill area, with water as this would cause the device to stop working.
4. Once cleaned, fill your Coldfire® accordingly and turn ON.

CAUTION

Your Coldfire® module is flammable. Do not attempt to light. Doing so could result in personal injury or damage to the light and electrical components. Your Coldfire® module is intended for Indoor use. Keep away from heat sources and out of extreme temperatures. Doing so may result in damage to the components and will void the warranty. The Coldfire® module is breakable. Dropping can break or damage the module and can also damage internal components, voiding the warranty.

This product contains small parts, which, if removed, can pose a choking hazard. Keep away from small children.

TROUBLESHOOTING

ISSUE: After you filled water and charged power, LED is ON but no faux fire flame being seen.

SOLUTION: Sponge stick is dirty. Remove used sponge stick and rinse with filtered water first, place back in cap, locking in place, and turn on. If still not working replace with new sponge stick.☒

ISSUE: If machine will not function after filling with filter water, it's possible too much water was added.

SOLUTION: Pour all water out and make sure only the appropriate amount of water is being poured in, use 4.25oz included measuring cup. If the machine will still not work, its possible water is in the air pipe. Using your mouth blow deeply

a few times through the nozzle to remove any possible air bubbles that may have formed.



-USING YOUR MOUTH BLOW THROUGH THE NOZZLE. RECOMMEND 3 DEEP BLOWS, TO HELP MOVE ANY WATER BUILD UP ACCUMULATED IN AIR PIPE.

FCC COMPLIANCE

NOTE: This device has been tested and found to comply with the limits for a class B digital device pursuant to part 15 of the FCC rules. These limits are designed to provide reasonable protection against harmful interference in a residential installation. The device generates, uses, and can radiate radio frequency energy and, if not installed and used in accordance with the instructions, may cause harmful interference to radio communications. There is no guarantee that interference will not occur in a particular installation. If this device does cause harmful interference to radio or television reception, which can be determined by turning this device off and on, the user is encouraged to try to correct the interference by one or more of the following measures:

- Reorient or relocate the receiving antenna.
- Increase the distance between this device and the receiver.
- Connect the equipment into an outlet on a circuit different from that to which the receiver is connected.
- Consult the dealer or an experienced radio/TV technician for help.

This device complies with part 15 of the FCC rules. Operation is subject to the following conditions: (1) This device may not cause harmful interference, and (2) This device must accept any interference received, including interference that may cause undesired operation.

WARNING

Changes or modifications not expressly approved by the party responsible for compliance could void the user's authority to operate the equipment.